

panko[®]

monitoring traps

Product Catalogue 2025



www.panko.pl

Contents:

▪ About us	03
▪ Fly Trap	04
▪ Spider Control	08
▪ Insect Control GARDEN	09
▪ Cockroach control	13
▪ Moth control	17
▪ Silverfish control	20
▪ Tribolium control	21
▪ Rodent control	24
▪ Bed bugs control	26
▪ Glueboards	27
▪ Museum Line	28
▪ L-trap	30
▪ Sticky roll trap	31
▪ Contacts	32

About US

Our company has been in business since 1993. We specialize in the production of insecticide-free traps to monitor insects and other pests. Our specialties comprise:

- traps for monitoring the presence of harmful pests in warehouses, including insects and rodents
- traps for monitoring the presence of harmful pests in libraries and museums
- traps for monitoring the presence of pests in agricultural crops
- glueboards for UV units
- glueboards to monitor insects
- rodent bait stations

In creating our traps, we use our own unique construction solutions which ensure effective luring of pests. The precision and consistent production quality of our traps result in enduring satisfaction and recognition from our clients.

Private labels

We are the leading producer of attractant-based traps for the largest private label retail and specialty brands in Europe. Working with us, you are guaranteed:

- the lowest prices and a favorable relationship between quality and consumer pricing
- the assurance of additional sales growth potential in developed countries as well as in developing markets
- constant innovation, so you always receive the best, most up-to-date products
- high efficiency, ensuring you receive your products on a timely basis
- products which are manufactured completely void of all harmful substances and chemicals
- adherence to the principles of sustainable development in the manufacture of our environmentally-friendly products
- positive business relationships, which are exceptionally important for us.



STICKY FLY STRING



Application	effective against: synanthropic flies
Material	PP available in all colors
Specific features	- strong glue, stable in a wide range of temperature and humidity conditions - product does not contain harmful substances - easy to use
Method of set-up	to be hung up in stables or cattle sheds by means of enclosed hooks
Detail dimensions	available lengths : 100m; 200m; 400m ; 700m
Package	1 pcs/box, 6 pcs/ carton box-string
Shelf life	5 years from date of production

STICKY FLY STRING COMPLETE



Application	effective against: synanthropic flies
Material	metal
Specific features	- product does not contain harmful substances - easy to use - when the string is full replace it with the refill
Method of set-up	to be hung up in stables or cattle sheds according to the instruction
Detail dimensions	available lengths : 400m ; 700m
Package	1 pcs/box
Shelf life	5 years from date of production



FLAT FLY PAPER



Application	capturing flies and other flying insects
Material	coated paperboard; the adhesive surface is secured with silicone liner
Specific features	<ul style="list-style-type: none"> - ultra-strong glue, stable in a wide range of temperature and humidity conditions - product does not contain harmful substances - a modern design of a flat glue trap with colorful prints - easy to use
Method of set-up	to be hung up in infested areas
Detail dimensions	8 x 32cm
Package	10 pcs/ foil, 50 pcs/box, 100 pcs/box, 1000 pcs/carton box
Shelf life	5 years from date of production

WINDOW FLY TRAP



Application	capturing flies and other flying insects
Material	coated paperboard; the adhesive surface is secured with silicone liner
Specific features	<ul style="list-style-type: none"> - ultra-strong glue, stable in a wide range of temperature and humidity conditions - product does not contain harmful substances - fits behind curtains and blinds and hides flies from view
Method of set-up	to be placed in a window/door corner
Detail dimensions	13,5x8cm-trap; 15,5x10,8x1,2cm -box (2 pcs)
Package	2 pcs/box 12 boxes/ display case 10 display cases/ carton box
Shelf life	5 years from date of production

FLY PAPER ROLL 10M



Application	highly effective against flying insects
Material	white coated paperboard with prints
Specific features	<ul style="list-style-type: none"> - designed for interiors with high insect activity - product does not contain harmful substances
Method of set-up	to be hung up in stables or cattle sheds by means of enclosed hanger
Detail dimensions	26x6cm x10m
Package	12 pcs/ display case 2 display cases/carton box
Shelf life	5 years from date of production

STICKY FLY STRING COMPLETE

Usage: for use to capture flies of different species in closed spaces such as farm buildings, stables, or greenhouses.

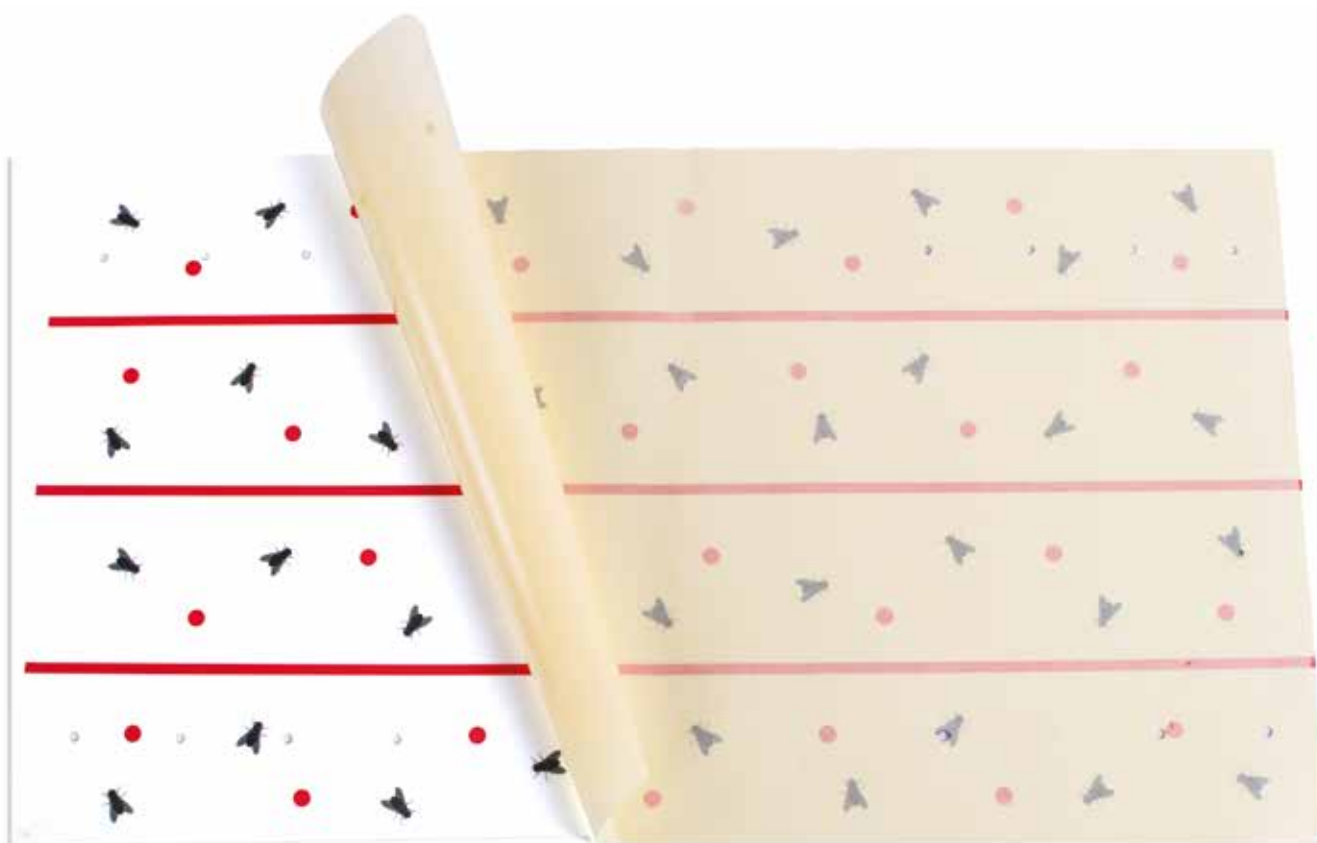
(*Stomoxys calcitrans*, *Musca domestica*, *Lucilia sericata*, *Calliphora vicina*, *Fannia canicularis*, ...)

Flies prefer to land on surfaces with clear-cut edges, which makes the string highly effective against those annoying insects. The product dramatically reduces the number of flies in a short time. The glue coated surface is resistant to temperatures up to 50°C and the glue does not run down. Deployment: It is recommended to examine the room to be treated and determine permanent fixing points for installing the string. It is a recommended practice since, after the entire adhesive surface is covered with captured insects, another length of string needs to be unrolled and attached. The number of fixing points is not specific and should depend on the number of insects. For larger amounts, the string can be deployed as a cobweb. It is recommended to set the fixing points in the upper parts of facilities, out of the reach of children.



CURTAIN GLUE BOARDS

Application	effective against: synanthropic flies, aphids, thrips, greenhouse whiteflies, cherry fruit flies, codling moths, apple leaf miners and other insect pests of plants
Material	white coated paperboard with prints
Specific features	- strong glue, stable in a wide range of temperature and humidity conditions - product does not contain harmful substances
Method of set-up	to be hung up in stables or cattle sheds by means of enclosed hanger
Detail dimensions	60x34cm
Package	4 pcs/ foil 25 foils/carton box
Shelf life	5 years from date of production





SPIDER TRAP

The trap emits green light and is enriched with a natural scent attractant incorporated in the glue. It is designed for monitoring the presence of spiders and harmful insects – in particular silverfish, blue bottle flies, green bottle flies, clothes moths, and flying beetles with nocturnal activity (e.g., *Stegobium paniceum* – Drugstore beetle).

Key Advantages:

- Dual-action system: green light and attractant work independently.
- Effective against spiders and other harmful insects.
- Simple to use and easy to place in corners or under furniture.
- A short exposure to sunlight is sufficient for 48 hours of glowing.
- Equipped with a handle for convenient placement and removal.
- Resistant to sunlight and increased humidity.
- Long-lasting effectiveness – works up to 1 month.
- Easy disposal – can be discarded with regular household waste after use.

Installation Instructions:

1. Remove the protective paper from the adhesive surface.
2. Assemble the trap according to the provided scheme.
3. Place in the chosen location – preferably in room corners or under furniture, close to edges for easy access.
4. For maximum effectiveness, position the trap where the luminescent points can be exposed to sunlight (even reflected light).

Technical Specifications:

- **Material:** Coated cardboard with adhesive layer protected by silicone paper
- **Special features:** Contains photoluminescent attracting points and a natural attractant incorporated into the adhesive
- **Dimensions:** 20 × 9.5 cm
- **Shelf life:** 3 years from the date of production



COVER TRAPS

Application	highly effective against: Cydia pomonella L. (Codling fruit moth) Grapholita funebrana (Plum fruit moth) Cameraria ohridella (horse-chestnut leaf miner) Tuta absoluta (Scrobipalpaloides absoluta)
Material	transparent PS
Specific features	- trap design rules out the possibility of birds touching the glue, unlike in standard traps - product does not contain harmful substances
Method of set-up	to be hung in fruit trees using the attached hanger
Detail dimensions	16,5x11,5cm
Package	2 pcs/ box 20 boxes/carton box
Shelf life	2 years from date of production



GARDEN ADHESIVE PLATES

Application	highly effective against: aphids, thrips, greenhouse white-flies, cherry fruit flies, codling moths, apple leaf miners and other insect pests of plants
Material	PS, available in colors: white, yellow, blue, green, black
Specific features	- strong glue, stable in a wide range of temperature and humidity conditions - adhesive surface on both sides of sheet - product does not contain harmful substances - resistant to moisture and UV radiation
Method of set-up	to be hung by using the attached hanger
Detail dimensions	24x17cm; 24x10cm
Package	10 pcs foli or box 25 boxes/carton box or 50 foli/carton box
Shelf life	5 years from date of production



COVER TRAPS

EUIPO registered design 003142975.

Available for :

- Cydia pomonella
- Cameraria ohridella
- Laspeyresia funebrana
- Ceratitis capitata
- Drosophila suzuki
- Lobesia botrana
- Phyllocnistis citrella
- Tuta absoluta





SMALL ADHESIVE PLATES



Application	highly effective against: aphids, thrips, greenhouse white-flies, cherry fruit flies, codling moths, apple leaf miners and other insect pests of plants
Material	PS, available in colors: white, yellow, blue, green, black
Specific features	- strong glue, stable in a wide range of temperature and humidity conditions - adhesive surface on both sides of sheet - product does not contain harmful substances - resistant to moisture and UV radiation
Method of set-up	to be set up by means of enclosed sticks
Detail dimensions	15x8cm
Package	10 pcs foil or box 25 boxes/carton box or 50 foil/carton box
Shelf life	5 years from date of production

BOX TREE MOTH PHEROMONE TRAP



The pheromone trap is an efficient and environmentally friendly tool for monitoring the presence of the box tree moth throughout the entire growing season. By using pheromones that attract adult males, it effectively disrupts the pest's reproductive cycle. This is an ideal solution for garden enthusiasts who prefer natural plant protection methods.

Key Advantages:

- **Safety** – The product is safe for humans and pets and contains no toxic substances.
- **Early Warning** – Allows quick detection of the first signs of pest presence to implement additional measures.
- **Population Reduction** – Eliminating males limits the reproduction of the moth and the development of larvae.
- **Eco-Friendly** – Harmless to birds, bees, and other beneficial insects.
- **Easy Installation** – Simply hang the trap on a branch near the boxwoods.
- **Reusable** – The trap's design allows long-term use, and pheromone inserts can be replaced as needed.

Installation Instructions:

- **Location:** Hang the trap on a tree branch.
- **Distance from boxwoods:** The trap should be placed 2–3 meters away from the nearest boxwood shrubs.
- **Mounting Height:** The optimal hanging height is 2–2.5 meters above the ground.

Technical Specifications:

- **Coverage Area:** One trap protects up to 200 m² of monitored area.
- **Set Contents:** 1 trap + 1 pheromone insert.
- **Material:** Weather-resistant plastic.
- **Usage Period:** From April to September/October, depending on climatic conditions.

COCKROACH TRAP PAGODA



Application	highly efficient against <i>Blatella germanica</i> , <i>Blatta orientalis</i> and others
Material	coated paperboard, the adhesive surface is secured with silicone liner
Specific features	<ul style="list-style-type: none"> - rigid structure - food attractant (glue/tablet) - space for service notes - product does not contain harmful substances. - designed to ensure high efficiency even in the most adverse conditions
Method of set-up	to be set up directly on surface or in a casing (the casing is not included in the price)
Detail dimensions	20x10cm
Package	15 pcs/ foil - 8 foils/carton box 5pcs/box- 20 boxes/carton box
Shelf life	3 years from date of production

COCKROACH TRAP SMALL (2 pack)



Application	highly efficient against <i>Blatella germanica</i> , <i>Blatta orientalis</i> and others
Material	coated paperboard, the adhesive surface is secured with silicone liner
Specific features	<ul style="list-style-type: none"> - rigid structure - food attractant (glue/tablet) - product does not contain harmful substances
Method of set-up	to be set up directly on surface
Detail dimensions	14x9,7cm-trap, 17,5 x10,8 x1,2cm-box (2 pcs)
Package	2 pcs/box 12 boxes/display case 10 display cases/carton box
Shelf life	3 years from date of production

COCKROACH TRAP TRIPLE



Application	highly efficient against <i>Blatella germanica</i> , <i>Blatta orientalis</i> and others
Material	coated paperboard, the adhesive surface is secured with silicone liner
Specific features	<ul style="list-style-type: none"> - compact size - food attractant (glue/tablet) - space for service notes - product does not contain harmful substances
Method of set-up	to be set up directly on surface or in a casing (the casing is not included in the price)
Detail dimensions	10x 7cm
Package	30 pcs/foil 50 foils/carton box
Shelf life	3 years from date of production

COCKROACH TRAP



The traps are intended for monitoring the presence of:
Blatella germanica
Blatella americana
Blatta orientalis
Shelfordella lateralis
and other cockroaches

The traps contain an attractant which is a blend of food substances. The attractant is in the form of a tablet. A smell is emitted in order to lure the insects to the trap.
One trap protects an area of approx. 9 m². The attractant does not attract insects from long distances, so it cannot automatically increase the level of infestation.
The traps maintain their optimum insect capturing performance in the temperature range from + 5 °C to + 50 °C. In the consumer pack, the trap lifetime is up to 36 months from the manufacture date. An unpacked and set up trap will normally remain active for 30-60 days. Its effective performance may be shortened by factors accelerating deactivation of the adhesive surface, such as high amount of dust in the air.



COCKROACH MONITORING PAD



Application	highly efficient against <i>Blattella germanica</i> , <i>Blatta orientalis</i> and others
Material	coated paperboard, the adhesive surface is secured with silicone liner
Specific features	- compact size - food attractant (glue/tablet) - printed grid - product does not contain harmful substances.
Method of set-up	to be set up directly on surface or in a casing (the casing is not included in the price)
Detail dimensions	7,8x 5,8cm
Package	100 pcs/box 10 boxes/carton box
Shelf life	3 years from date of production

INSECT MONITOR



Application	A casing for glue pads for monitoring German cockroaches and oriental cockroaches
Material	PP
Specific features	- easy to replace glue pads - smooth surface for a service sticker - product does not contain harmful substances
Method of set-up	on a wall/floor, wall plug/tape
Detail dimensions	10,5x8,5x1,9cm
Package	50 pcs/carton box

FOOD MOTH TRAP SMALL



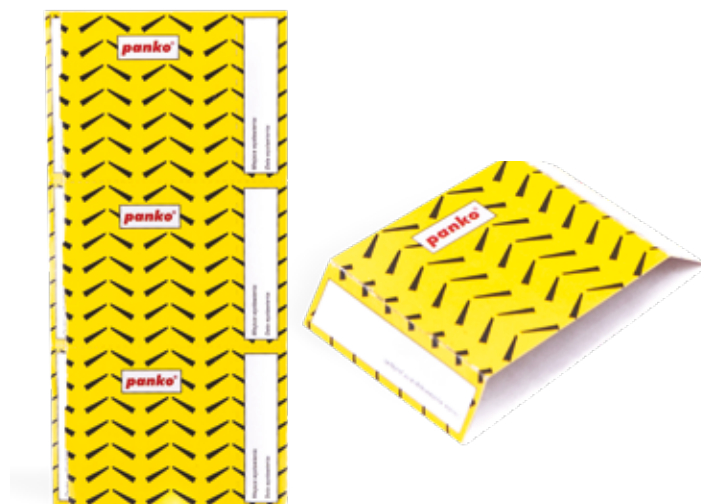
Application	highly effective against: <i>Plodia interpunctella</i> , <i>Ephestia elutella</i> , <i>Ephestia kuehniella</i> , <i>Cadra cautella</i> Wlk.
Material	coated paperboard; the adhesive surface is secured with silicone liner
Specific features	<ul style="list-style-type: none"> - rigid structure - pheromone added directly to glue - product does not contain harmful substances - one trap cover up from 20m² to 100m² - space for service notes
Method of set-up	to be set up directly on a shelf or in a casing (the casing is not included in the price)
Detail dimensions	14x9,7cm- trap; 17,5 x10,8 x1,2cm- box (2 pcs)
Package	2 pcs/box- 12 boxes/display case- 10 display cases/ carton box 10 pcs foil/ 10 foils carton box
Shelf life	3 years from date of production

FLAT FOOD MOTH TRAP



Application	highly effective against: <i>Plodia interpunctella</i> , <i>Ephestia elutella</i> , <i>Ephestia kuehniella</i> , <i>Cadra cautella</i> Wlk.
Material	coated paperboard; the adhesive surface is secured with silicone liner
Specific features	<ul style="list-style-type: none"> - rigid structure - pheromone added directly to glue - product does not contain harmful substances - space for service notes
Method of set-up	to be hung up in area where there is a food moth activity
Detail dimensions	22cmx7,8cm
Package	1 pcs/foil 100 pcs/carton box
Shelf life	3 years from date of production

FOOD MOTH TRAP TRIPLE



Application	highly effective against: <i>Plodia interpunctella</i> , <i>Ephestia elutella</i> , <i>Ephestia kuehniella</i> , <i>Cadra cautella</i> Wlk.
Material	coated paperboard; the adhesive surface is secured with silicone liner
Specific features	<ul style="list-style-type: none"> - compact size - pheromone added directly to glue - space for service notes - product does not contain harmful substances
Method of set-up	to be set up directly on surface or in a casing (the casing is not included in the price)
Detail dimensions	10x 7cm
Package	3 pcs/foil 150 pcs/carton box
Shelf life	3 years from date of production

CLOTH MOTH TRAP SMALL (2 pack)



Application	highly efficient against <i>Tineola bisselliella</i> , <i>Tinea pellionella</i>
Material	coated paperboard; the adhesive surface is secured with silicone liner
Specific features	- rigid structure - pheromone added directly to glue - product does not contain harmful substances
Method of set-up	to be set up directly on a shelf or hung up by means of an enclosed hook
Detail dimensions	14x9,7cm- trap; 17,5 x10,8 x1,2cm- box (2 pcs)
Package	2 pcs/box 12 boxes/display case 10 display cases/carton box
Shelf life	3 years from date of production

CLOTH MOTH TRAP M-TRAP



Application	highly efficient against <i>Tineola bisselliella</i> , <i>Tinea pellionella</i>
Material	coated paperboard; the adhesive surface is secured with silicone liner
Specific features	- rigid structure - pheromone added directly to glue - product does not contain harmful substances
Method of set-up	to be set up directly on a shelf or hung up by means of an enclosed hook
Detail dimensions	17x7,8cm trap; 18,5x9x3,5cm-box (10 pcs)
Package	10 pcs/box 20 boxes/carton box
Shelf life	3 years from date of production

FOOD MOTH TRAP



Application	Highly effective against <i>Plodia interpunctella</i> , <i>Ephestia elutella</i> , <i>Ephestia kuehniella</i> , <i>Cadra cautella</i>
Material	Coated cardboard, adhesive layer protected with silicone paper
Specific features	- Aesthetic appearance - Environmentally friendly product, contains no harmful substances - Easy to use - Pheromone incorporated directly into the glue - One trap protects an area of approx. 100 m ²
Installation:	To be set up directly on the surface
Detail dimensions	14 x 10 cm
Package	6 pcs. / 10 pcs. / 20 pcs.
Shelf life	3 years from the date of production

FOOD MOTH MONITORING PAD



Application	highly effective against: <i>Plodia interpunctella</i> , <i>Ephestia elutella</i> , <i>Ephestia kuehniella</i> , <i>Cadra cautella</i> Wlk.
Material	coated paperboard, the adhesive surface is secured with silicone liner
Specific features	- compact size - pheromone added directly to glue - printed grid - product does not contain harmful substances.
Method of set-up	to be set up directly on surface or in a casing (the casing is not included in the price)
Detail dimensions	7,8x 5,8cm
Shelf life	3 years from date of production

FOOD AND CLOTH MOTH TRAP 2IN1



Application	highly effective against: <i>Plodia interpunctella</i> , <i>Ephestia elutella</i> , <i>Ephestia kuehniella</i> , <i>Cadra cautella</i> Wlk., <i>Tineola bisselliella</i> , <i>Tinea pellionella</i>
Material	coated paperboard, the adhesive surface is secured with silicone liner
Specific features	- rigid structure - pheromone added directly to glue - product does not contain harmful substances
Method of set-up	to be set up directly on surface where there is a moth activity
Detail dimensions	14x9,7cm- trap; 17,5 x10,8 x1,2cm- box (2 pcs)
Package	2 pcs/box 12 boxes/display case 10 display cases/carton box
Shelf life	3 years from date of production

CLOTH MOTH TRAP DELTA



Application	highly efficient against <i>Tineola bisselliella</i> , <i>Tinea pellionella</i>
Material	coated paperboard, the adhesive surface is secured with silicone liner
Specific features	- rigid structure - pheromone added directly to glue - product does not contain harmful substances - large adhesive surface
Method of set-up	to be set up directly on a shelf or hung up by means of an enclosed hook
Detail dimensions	33x11,4cm-trap, 12,5 x12,5 x1,1cm-box
Package	1 pcs/box 12 boxes/display case 10 display cases/carton box
Shelf life	3 years from date of production

S-TRAP (2 pcs)

S-TRAP (30 pcs)



Application	highly efficient against <i>Lepisma saccharina</i> , <i>Thermobia domestica</i>
Material	transparent PS, hinged lid
Specific features	<ul style="list-style-type: none"> - transparent, hermetic structure - liquid, stable and not runny glue - attractant in tablet - product does not contain harmful substances - traps should be set up on a smooth surface - effectively lures even those insects which do not experience food shortages - the trap features a patent-protected 'lure and deceive' system
Method of set-up	to be set up directly on the floor
Detail dimensions	11,2x10,5x1,2 cm – trap; 18,4x12,5x3cm- box (2 pcs); 29,5x11,5x12,5cm- box (30 pcs)
Package	2 pcs/box – 24 boxes/carton box, 30pcs/box- 10 boxes/ carton box
Shelf life	2 years from date of production



S-TRAP CASE



Application	A casing for s-traps for monitoring <i>Lepisma saccharina</i> , <i>Thermobia domestica</i>
Material	metal
Specific features	<ul style="list-style-type: none"> - smooth surface for a service sticker - product does not contain harmful substances
Method of set-up	on a floor
Detail dimensions	12x11x1,5cm
Package	10 pcs/carton box

T-TRAP



Application	highly efficient against: <i>Tribolium castaneum/confusum</i> , <i>Oryzaephilus surinamensis</i> , <i>Sitophilus granarius</i> .
Material	transparent PS, hinged lid
Specific features	<ul style="list-style-type: none"> - transparent - liquid, stable and not runny glue - a unique food attractant - product does not contain harmful substances - a patented structural solution which assures complete flour beetle and wheat weevil control - an enclosed structure which protects the interior of the trap from environmental contamination, and electrostatic entrance grooves which limit dust contamination inside the trap
Method of set-up	to be set up only inside a protective casing (the casing is not included in the price)
Detail dimensions	11,5x11,5x2,5cm- trap; 35x12x12,5cm- box (15 pcs)
Package	15 pcs/box – 10 boxes/carton box
Shelf life	2 years from date of production



T-TRAP CASE



Application	A casing for t-traps for monitoring flour beetles, wheat weevils
Material	metal
Specific features	<ul style="list-style-type: none"> - smooth surface for a service sticker - product does not contain harmful substances
Method of set-up	on a floor
Detail dimensions	12,5x11,7x2,6cm
Package	10 pcs/ carton box

S-TRAP

The traps are intended for monitoring the presence of:

Lepisma saccharina
Ctenolepisma longicaudata
Blatta orientalis

And:

Anthrenus – larva
Anthrenus museorum – coleoptorum
Attagenus smirnovi – coleoptorum
Attagenus smirnovi – larva
Ctenolepisma calva
Ctenolepisma lineata
Thermobia domestica

The S-trap is based on the solutions covered by the European patent EP 2863737.

The S-trap offers following clear advantages:

1. Selectivity on the insect species, which need to be controlled.
2. Dust is kept outside the trap, which offers an easy handling
3. As the S-trap is transparent, monitoring its content is a breeze.
4. The S-trap is compact and light, which makes it easy to transport and easy to handle
5. The S-trap is constructed in such a way that no physical contact with the glue is possible:
Hygienic and Safe to use.
6. After use the S-trap can be disposed of as normal waste.



Pest Defence

– Barrier Tape (20 m x 30 cm)

Product Description:

Pest Defence is a professional glue tape measuring 20 meters in length and 30 cm in width, designed for the effective capture of crawling insects and rodents such as mice.

Made from silicon-coated paper with a strong adhesive layer.

The product is an effective protective barrier in areas at risk of infestation.

Product Advantages:

- Effectiveness: The strong adhesive ensures the immediate immobilization of pests.
- Versatility: Ideal for use in warehouses, production facilities, restaurants, and other public utility buildings.
- Adaptability: The tape can be cut to the desired length and used with attractants to increase its effectiveness.
- Safety: Safe for humans and pets, free from toxic substances.

Usage:

1. Unroll the tape on a surface where pest activity has been observed.
2. If necessary, cut the tape to the appropriate length.
3. For increased effectiveness, apply a suitable attractant for the targeted pest.
4. Regularly check the tape and replace it as needed.

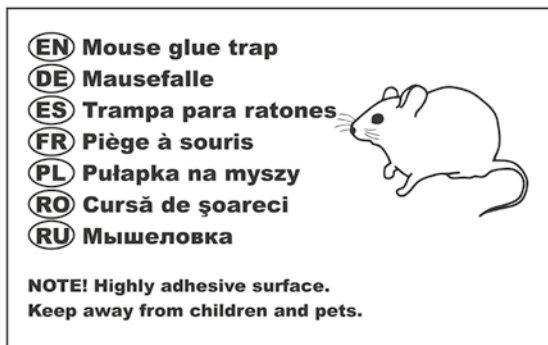
Technical Specifications:

- Length: 20 meters
- Width: 30 cm
- Material: Silicon-coated paper with adhesive layer

Pest Defence is an effective solution for crawling insects and rodents, maintaining cleanliness and hygiene in secured areas.



MOUSE GLUE TRAP



Application	capturing mice
Material	plastic
Specific features	- ultra strong glue - stable in a wide range of temperature and humidity conditions, - attractant in glue or in tablet - product does not contain harmful substances
Method of set-up	to be set up directly on the floor
Detail dimensions	21x14cm
Package	10 pcs/foil – 10 foils/carton box
Shelf life	3 years from date of production

MOUSE GLUE TRAP



Application	capturing mice
Material	plate/pressed plastic
Specific features	- ultra strong glue - stable in a wide range of temperature and humidity conditions, - food attractant in tablet - product does not contain harmful substances
Method of set-up	to be set up directly on the floor
Detail dimensions	13x5,5cm
Package	100 pcs/carton box
Shelf life	3 years from date of production

RAT GLUE TRAP



Application	capturing rats and mice
Material	plate/pressed plastic
Specific features	<ul style="list-style-type: none"> - ultra strong glue - stable in a wide range of temperature and humidity conditions, - food attractant in tablet - product does not contain harmful substances
Method of set-up	to be set up directly on the floor
Detail dimensions	21x12,5cm 25,5x14cm 26x13cm
Package	100 pcs/carton box
Shelf life	3 years from date of production

RODENT BAIT STATION



Application	bait station for controlling rats and mice
Material	PP & viscose copolymer
Specific features	<ul style="list-style-type: none"> - resistant to mechanical damage and temperature extremes (-20 °C to +40 °C) - easy servicing - without a key (a hidden snap lock) - smooth surface for a control sticker - includes a rod for vertical or horizontal rodenticide mounting inside the station
Method of set-up	to be secured to the floor or against a wall using a fixing plug
Detail dimensions	32x10,5x9,4cm
Package	24 pcs/carton box
Shelf life	3 years from date of production

BED BUG TRAP WITH ATTRACTANT (5 pack)

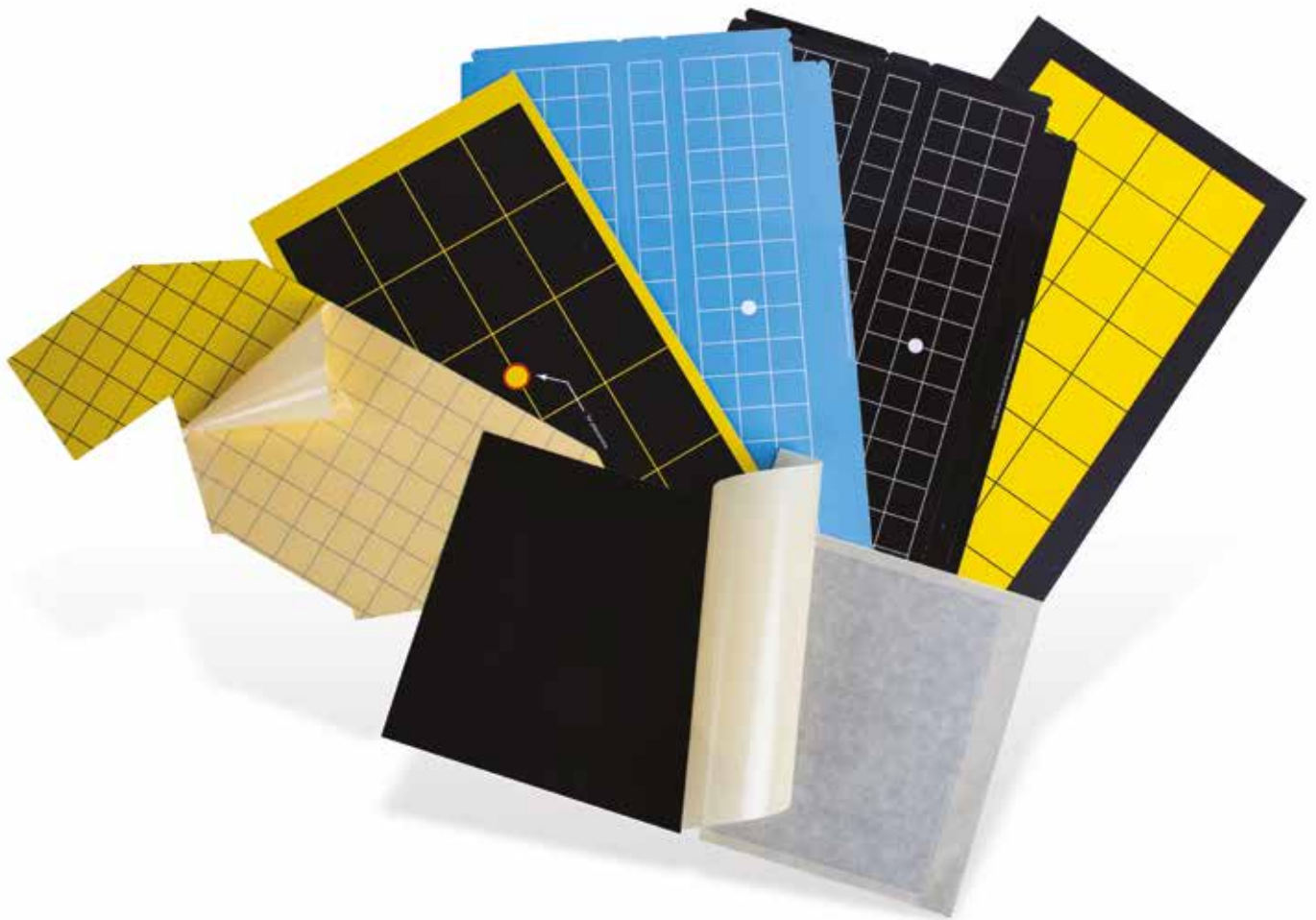
- Natural attractant
- Environmentally friendly
- 98% of effectiveness confirmed by IZI INNOVATION Laboratory
- Patented solution

Application	highly efficient against bedbugs (<i>Cimex lectularius</i>)
Material	coated paperboard, the adhesive surface is secured with silicone liner
Specific features	- coated paperboard - the adhesive surface is secured with silicone liner - product does not contain harmful substances
Method of set-up	Traps should be placed everywhere where bedbugs or traces of their existence were observed, i.e. droppings from digested blood.
Detail dimensions	9,7x9,7cm-trap; 20,3x20,3x3cm-box (5 pcs)
Package	5 pcs/box-20 boxes/carton box
Shelf life	3 years from date of production

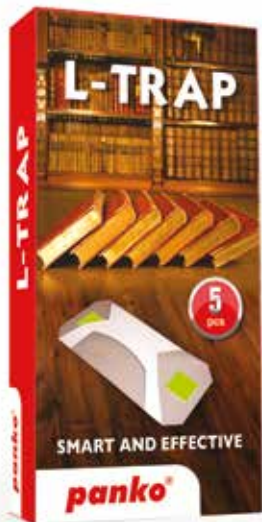


GLUEBOARDS

Application	monitoring of flying insects
Material	PS , PP, laminated paperboard
Specific features	<ul style="list-style-type: none">- fully resistant to UV radiation emitted by the insect light trap or the sun- strong adhesive stable in a wide range of temperature and humidity- available in every colour and shape- single or double sided- product does not contain harmful substances
Method of set-up	to be placed inside an insect light trap
Detail dimensions	customized size according to the UV light traps
Package	10 pcs foil; 10 foils/carton box
Shelf life	5 years from date of production



L-TRAP

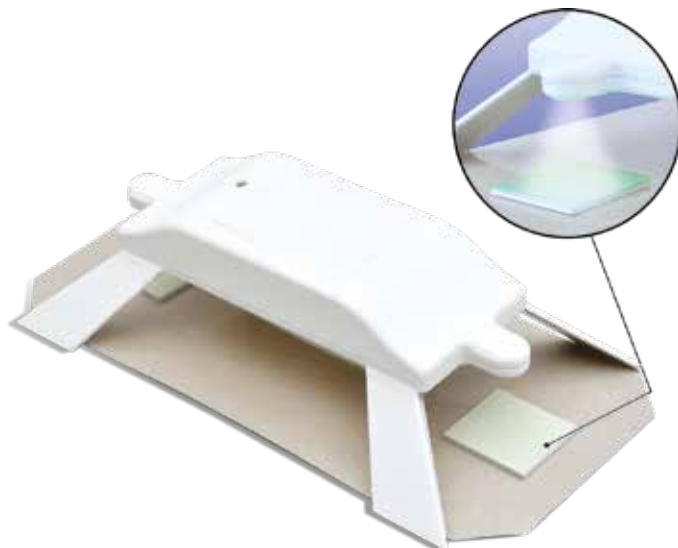


Application	Monitoring of flying beetles, among others: drugstore beetle (<i>Stegobium paniceum</i>), museum beetle (<i>Anthrenus museorum</i>), varied carpet beetle (<i>Anthrenus verbasci</i>), brown carpet beetle (<i>Attagenus smirnovi</i>), furniture beetle (<i>Anobium punctatum</i>), house longhorn beetle (<i>Hylotrupes bajulus</i>)
Material	coated paperboard, the adhesive surface is secured with silicone liner, attracting photoluminescent panels
Specific features	- traps contain photoluminescent plates that constantly emit light, which is a strong factor attracting night insects - product does not contain harmful substances
Method of set-up	-the traps should be set up in places illuminated with sunlight during the day – windowsills, cupboards, etc. -in particular cases, if the rooms are separated from sunlight, the traps may be set up in places where they can be exposed to strong artificial light for the longest possible time
Detail dimensions	21x9,8cm- trap;22x11x3,5cm- box (5 pcs)
Package	5 pcs/ box 20 boxes/ carton box
Shelf life	5 years from date of production



SOLARIS FOR L-TRAP

Specific features	- the device is battery-powered (batteries included), you can place it anywhere without plugging it into a power outlet - the LEDs do not emit UV radiation
Method of set-up	- SOLARIS can only be used with L-TRAP pest monitoring traps - the L-TRAP with SOLARIS lamp is ready to operate in all conditions, also with no light
Detail dimensions	18,2x10,5x5cm
Package	5 pcs/ box 20 boxes/ carton box



G-TRAP



Application	the traps are intended for monitoring the presence of insects by capturing them
Material	coated paperboard, the adhesive surface is secured with silicone liner,
Specific features	- product does not contain harmful substances
Method of set-up	- the traps should be set up next to walls, in room corners, i.e. on the routes the insects select most often - it is recommended to set up the traps at a distance of at least 5 m from each other
Detail dimensions	10x7cm-trap ; 22x11x3,5cm- box (30 pcs)
Package	30 pcs/ box 20 boxes/carton box
Shelf life	3 years from date of production

M-TRAP



Application	highly efficient against <i>Tineola bisselliella</i> , <i>Tinea pellionella</i>
Material	coated paperboard, the adhesive surface is secured with silicone liner
Specific features	- rigid structure - pheromone added directly to glue - product does not contain harmful substances
Method of set-up	the traps should be set up as closely as possible to places considered to be threatened by the presence of the clothing moth
Detail dimensions	17x7,8cm trap; 18,5x9x3,5cm-box (10 pcs)
Package	10 pcs/box 20 boxes/ carton box
Shelf life	3 years from date of production

S-TRAP



Application	highly efficient against <i>Lepisma saccharina</i> , <i>Thermobia domestica</i>
Material	transparent PS, hinged lid
Specific features	- transparent, hermetic structure - liquid, stable and not runny glue - attractant tablet - product does not contain harmful substances
Method of set-up	- in the areas where relative humidity exceeds 40% should be located 1 trap/1 room regardless area, above 40% - 1 trap/100m ² - should be placed on the floor – on smooth surface only - it is allowed to put traps on even carpets or fitted carpets - in libraries traps should be located under bookshelves, if not possible, stick to them (do not place the trap on shelves, tops or cabinets). - the trap should be placed in one place for min. 1 month (slight relocations are permitted).
Detail dimensions	11,2x10,5x1,2 cm – trap; 29,5x11,5x12,5cm-box (30 pcs)
Package	30 pcs/box – 10 boxes/carton box
Shelf life	2 years from date of production

STORED FOOD BEETLE TRAP

The Stored Food Beetle trap is a unique product designed to monitor the presence of various species of flying beetles. The trap is effective against:

Anobium punctatum – Common furniture beetle
Anthrenus museorum – Museum beetle
Anthrenus verbasci – Varied carpet beetle
Attagenus smirnovi – Brown carpet beetle
Lasioderma serricorne – Cigarette beetle
Sitophilus oryzae – Rice weevil
Stegobium paniceum – Drugstore beetle
and others.

Usage

The activated trap should be placed in a location where it will be exposed to regular cycles of sunlight. In areas without access to sunlight, the trap should be used in conjunction with the SOLARIS illuminator.

How It Works

The trap is equipped with two phosphorescent plates. After being charged with light energy, the plates emit green light with a wavelength of 520 nm. Green light of this wavelength is particularly attractive to nocturnal insects. Nocturnal insects navigate using available light sources, such as phosphorescent light emitted by fungi or reflected moonlight. Attracted by the light from the plates, the insects stick to the adhesive surface. Fully charged plates form light points visible for up to 12 hours after full exposure.

Material

Cardboard coated with PE, equipped with two 520 nm light-emitting plates.

Dimensions

Base: 180 x 100 mm

Lure

Phosphorescent plate that emits 520 nm light after activation.



STICKY ROLL TRAP

For trapping whiteflies, thrips, leaf miner and fungus gnats in hot spots or places where high pressure can be expected, such as along gables, ventilation windows and (other) draughty places.

Application

highly effective against: aphids, thrips, greenhouse whiteflies, cherry fruit flies, codling moths, apple leaf miners and other insect pests of greenhouse

Material

HDPE 0,06mm

Specific features

- specific color attracts Insects
- outstanding for controlling and mass collection of insects
- double spread glue on PE film
- waterproof
- environmental-friendly product

Method of set-up

sticky rolls are placed in special systems prepared for this purpose, which enable manual or automatic rewinding

Detail dimensions length: 5, 10, 15 and 30 cm x 100 m , 130m, 160m other lengths on request

Package

6-8 pcs /carton box

Shelf life

5 years from date of production



panko[®]
monitoring traps

Contakt:



Aleksandra Bajko

aleksandra.bajko@panko.pl

+48 609 297 779



Dariusz Jarosiński

dariusz.jarosinski@panko.pl

+48 603 929 989



Maria Dutkowska

maria@panko.pl

+48 609 987 771